



GSE – PROMOTE 2

**C6 Validation Report 3D
Ozone Service**

REF : PROMOTE 2 C6
ISSUE : 1.0
DATE : 19.06.2008
PAGE : 1

DOSSIER: COMMON

TASK: -2-



TITLE:

GMES SERVICE ELEMENT PROMOTE 2

**C6 Validation Report 3D Ozone Service
3D OZONE RECORD SERVICE
Version 2**



GSE - PROMOTE 2
C6 Validation Report 3D
Ozone Service

REF: PROMOTE-2 C6
ISSUE: 1.0
DATE: 19.06.2008
PAGE: II

DOCUMENT STATUS SHEET

	FUNCTION	NAME	DATE	SIGNATURE
LEAD AUTHOR	editor	R. Delgado J. C. Lambert		
CONTRIBUTING AUTHORS	Service leader Service providers	F. Baier F. Baier Q. Errera		
REVIEWED BY	Reviewers			
APPROVED BY	Technical officer (ESA)			
ISSUED BY	Project manager			



GSE - PROMOTE 2
C6 Validation Report 3D
Ozone Service

REF: PROMOTE-2 C6
ISSUE: 1.0
DATE: 19.06.2008
PAGE: III

DOCUMENT CHANGE RECORD

Issue	Date	Modified Items / Reason for Change
Version 1		
0.1	22.02.2007	Draft template created
0.2	02.03.2007	S5 and SLA Specifications implemented in draft template
0.3	05.03.2007	Draft template distributed (First iteration)
0.4	16.04.2007	Draft template reformatted and distributed
0.5	15.05.2007	Input from BIRA-IASB received
0.6	16.05.2007	Input from DLR received and integrated in document
0.7	21.05.2007	Document edited
0.8	21.05.2007	Document sent to providers for review
0.9	23.05.2007	Document received and edited
1.0	25.06.2007	Document cross-references and properties updated
Version 2		
1.1	30.05.2008	Template updated and distributed
1.2	17.06.2008	Input from DLR
1.3	19.06.2008	Input from Bira
1.8	20.06.2008	Document edited and distributed for final review

LIST OF TABLES

Table 1.2-1 ROSE Products characterization	2
Table 1.2-2 Data used for validation of the ROSE products	4
Table 1.2-3 Validation of individual components of the ROSE products	5
Table 1.2-4 Validation against specifications and against user requirements of ROSE Products.....	8
Table 1.2-5 Quality assessment and control procedures for ROSE.....	9
Table 1.3-1 Characterization of SACADA products.....	11
Table 1.3-2 Data used for validation of the SACADA Products.....	12
Table 1.3-3 Validation of individual components of SACADA products.....	14
Table 1.3-4 Validation of SACADA products against specifications and against user requirements...	16
Table 1.3-5 Quality assessment and control procedures for SACADA	17
Table 1.4-1 Characterization of BASCOE Products	19
Table 1.4-2 Data used for validation of BASCOE Products	21
Table 1.4-3 Validation of individual components of BASCOE Products	26
Table 1.4-4 Validation of BASCOE against specifications and against user requirements	28
Table 1.4-5 Quality assessment and control procedures for the BASCOE products	29

	<p align="center">GSE - PROMOTE 2</p> <p align="center">C6 Validation Report 3D Ozone Service</p>	<p>REF: PROMOTE-2 C6 ISSUE: 1.0 DATE: 19.06.2008 PAGE: V</p>
---	--	--

LIST OF FIGURES

Figure 1.1-1 Structure of the Ozone Services within PROMOTE 2.	1
Figure 1.2-1: Global monthly mean results from comparison of GOME/NNORSY/ROSE reanalyses. Statistical (rms) and mean deviations (bias) from collocated observations are plotted for both reanalyses versions I and II. T	8
Figure 1.3-1: Global mean results showing a comparison of ROSE (first row) and SACADA (second row) results to respective HALOE observations covering the time period October – March 2003/2004. The indicated scatter (horizontal bars for observations and lines for model analyses) shows the standard deviation from the mean.....	12
Figure 1.4-1 Comparison between BASCOE Ozone analyses from UARS/MLS assimilation and independent HALOE observations (see parameter Z_MEAN_LAT_OMA and Z_STD_LAT_OMA in section 2.2.3) from 1992 to 1999.	22
Figure 1.4-2 Comparison between BASCOE Ozone analyses from UARS/MLS assimilation and independent ozonesondes observations at South Pole at 68 hPa for the time period [1992-1999].	22

	<p align="center">GSE - PROMOTE 2 C6 Validation Report 3D Ozone Service</p>	<p>REF: PROMOTE-2 C6 ISSUE: 1.0 DATE: 19.06.2008 PAGE: VI</p>
---	--	--

LIST OF ACRONYMS

4DVAR	Four-dimensional variational assimilation method
ACE-FTS	Atmospheric Chemistry Experiment - Fourier Transform Spectrometer
ASSET	Assimilation of ENVISAT data working group
AURA	NASA scientific research satellite - third component of EOS
BASCOE	Belgian Assimilation System of Chemical Observations from ENVISAT
BIRA-IASB	Belgian Institute for Space Aeronomy
BMBF	Federal Ministry of Education and Research
CCMval	Chemistry Climate Model Validation working group
CIOx	Reactive chlorine oxide family (Cl + ClO)
COMMA	Cologne Model of the Middle Atmosphere
CTM	Chemistry-Transport Model
DFD	German Remote Sensing Data Center
DG Environment	European Commission's Environment Directorate-General
DLR	German Aerospace Center
ECMWF	European Center for Medium range Weather Forecasts
ENVISAT	European Environmental Satellite
EOS	Earth Observation System
GME	Global Model of the German Weather Service
GOME	Global Ozone Mapping Experiment
GOMOS	Global Ozone Monitoring by Occultation of Stars
HALOE	Halogen Occultation Experiment
IASI	Infrared Atmospheric Sounding Interferometer
ICE	Water ice phase PSC constituent
NAT	Nitric acid trihydrate PSC constituent
INVERT	Inversion of vertically resolved trace gas profiles from ERS-2-GOME
KF	Kalman-Filter based assimilation method
METOP	Meteorological Polar-Orbiting Operational Satellite
MIPAS	Michelson Interferometer for Passive Atmospheric Sounding
MPI	Message Passing Interface – Parallelization Library
MLS	Microwave Limb Sounder
NNORSY	Neural Network Ozone Retrieval System
NAT	Nitric Acid Trihydrate – PSC constituent
NOx	Reactive nitric oxide family (NO + NO ₂)
OI	Optimum Interpolation based assimilation method
OMF	Observation minus First-guess/Forecast
OmF	Observation minus First-guess/Forecast
PSCs	Polar Stratospheric Clouds
PC cluster	Intel-based multiprocessor computing platform
RIU	Rhenish Institute for Environmental Research
ROSE	Research for Ozone in the Stratosphere and its Evolution
SACADA	Synoptic Analysis of Chemical constituents by Advanced Data Assimilation
SCIAMACHY	Scanning Imaging Absorption Spectrometer for Atmospheric Cartography
SCISAT	Canadian Atmospheric Research Satellite



GSE - PROMOTE 2

**C6 Validation Report 3D
Ozone Service**

REF: PROMOTE-2 C6
ISSUE: 1.0
DATE: 19.06.2008
PAGE: VII

SLA

SPARC

SdA

TOMS

UARS

WDC-RSAT

WMO

Service Level Agreement

Stratospheric Processes and their Role in Climate

Service d'Aeronomie

Total Ozone Mapping System

Upper Atmospheric Research Satellite

World Data Center for Remote Sensing of the Atmosphere

World Meteorological Organization

	<p align="center">GSE - PROMOTE 2 C6 Validation Report 3D Ozone Service</p>	<p>REF: PROMOTE-2 C6 ISSUE: 1.0 DATE: 19.06.2008 PAGE: VIII</p>
---	--	--

TABLE OF CONTENTS

DOCUMENT STATUS SHEET	II
DOCUMENT CHANGE RECORD	III
LIST OF TABLES.....	IV
LIST OF FIGURES.....	V
LIST OF ACRONYMS.....	VI
TABLE OF CONTENTS.....	VIII
1 3D OZONE SERVICE	1
1.1 Service framework	1
1.2 ROSE Products.....	1
1.2.1 ROSE Product Characterization	2
1.2.2 Validation plan and validation data	2
1.2.3 Validation of individual components.....	4
1.2.4 Validation against specifications and against user requirements	6
1.2.5 ROSE quality assessment and control	8
1.3 SACADA Products	10
1.3.1 SACADA Product Characterization	10
1.3.2 Validation plan and validation data	11
1.3.3 Validation of individual components.....	12
1.3.4 Validation against specifications and against user requirements	14
1.3.5 SACADA quality assessment and control	16
1.4 BASCOE Products	19
1.4.1 BASCOE Product Characterization	19
1.4.2 Validation plan and validation data	20
1.4.3 Validation of individual components.....	23
1.4.4 Validation against specifications and against user requirements	26
1.4.5 Quality assessment and control procedures	29
1.5 References	30
1.5.1 Electronic references and online data access paths.....	30
1.5.2 Bibliographic references	30

1 3D OZONE SERVICE

1.1 Service framework

PROMOTE 2 products dealing with Ozone records, monitoring and forecast, are provided by two services: the Total Ozone Service and the demonstration Service providing 3D Ozone Records.

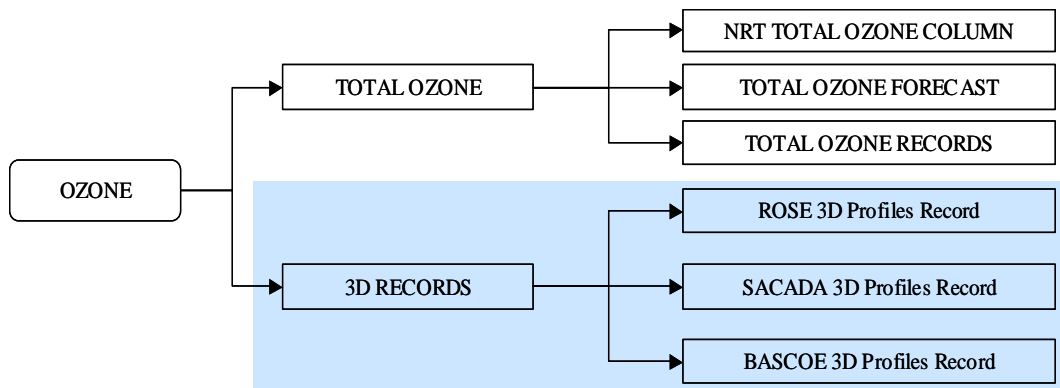


Figure 1.1-1 Structure of the Ozone Services within PROMOTE 2.

The 3D Records demonstration service derives long-term three-dimensional ozone record and additional information on ozone related species from the combination of three physic-chemical models, namely, ROSE, SACADA and BASCOE, and satellite observations via data assimilation.

1.2 ROSE Products

ROSE products consist of vertically resolved global synoptic analysis of stratospheric ozone mixing ratios (3D ozone), PSC area densities and accumulated daily ozone loss rates. Analyses are derived by sequential assimilation of GOME/NNORSY and MIPAS trace gas observations. The Assimilation scheme is Optimum Interpolation based with analysis errors propagated via transport and chemistry (Baier *et al.*, 2005). To balance a-priori and observational errors a χ^2 correction is performed dynamically calculated from a three-day running mean. To check the consistency of results and analyse model/instrument bias Observation minus First-guess (OMF) residuals are stored along the ozone analysis and its errors. Additionally comparisons of ozone and related trace gases to independent observations (ground based and satellites) are performed when data is available.

Service is/will be operational since/after: N/A

Research partners: BIRA-IASB

Provider(s): DLR

Validation contact: Frank Baier

	<p align="center">GSE - PROMOTE 2 C6 Validation Report 3D Ozone Service</p>	<p>REF: PROMOTE-2 C6 ISSUE: 1.0 DATE: 19.06.2008 PAGE: 2 of 29</p>
---	--	---

1.2.1 ROSE Product Characterization

3D gridded fields of synoptic ozone mixing ratios	
Parameter	Ozone concentration
Typical range	0 – 10 ppmv
Determination of the typical range (Method, criteria)	Maximum simulated mean value for single altitude
Units	ppmv
<i>Standards</i>	-
gridded fields of daily accumulated chemical ozone loss rates as mixing ratios per day	
Parameter	Ozone concentration
Typical range	+/- 20 ppbv per day
Determination of the typical range (Method, criteria)	maximum simulated mean value for single altitude
Units	ppmv
<i>Standards</i>	-
3D gridded fields of synoptic PSC area densities	
Parameter	PSC Density
Typical range	0 – 10 μ^2/cm^3
Determination of the typical range (Method, criteria)	Maximum simulated mean value for single altitude
Units	μ^2/cm^3
<i>Standards</i>	-

Table 1.2-1 ROSE Products characterization

1.2.2 Validation plan and validation data

There has been an extensive evaluation of ROSE/DLR ozone within the BMBF project INVERT (Bittner and Baier, 2006) and ESA's PROMOTE 1. Comparisons to HALOE and SAGEII observations show mean rms (root mean squared) errors well below 15% for the time period 1996-2002 using ERS2-GOME total ozone data and O3/PV correlations.



GSE - PROMOTE 2

C6 Validation Report 3D
Ozone Service

REF: PROMOTE-2 C6
ISSUE: 1.0
DATE: 19.06.2008
PAGE: 3 of 29

Similar results were attained by assimilating ENVISAT-MIPAS observations covering the winter period 2003/2004 (see below). In PROMOTE 2 the system is used to deliver first 3D ozone products for the period 1996-2005 and beyond. Results for 2003/2004 have been already compared to respective SACADA data and to HALOE observations. Using GOME/NNORSY data a 3D ozone record for the years 1996-2003 has been generated and is currently under investigation. Evaluation of PSC area densities and ozone loss rates is difficult (only data for single events, campaigns or other models) and will be part of future work.

VALIDATION DATA	
Ground based observations	
Stations	N/A
<i>In-situ</i> observations	
NILU ozone sondes campaigns	Availability: NILU, 1997-2000, 2002-2004 Spatial coverage: n.a. Temporal coverage: approx. one sounding per week Location (coordinates): see NILU station list Accuracy: N/A
Model outputs	
SACADA-MIPAS	Availability: PROMOTE Spatial coverage: global Temporal coverage: 2002-2004 Location (coordinates): -90° South to +90° North Accuracy: <15%
Other EO Data	
UARS/HALOE V19 O3 observations	Availability: NASA DAAC Spatial coverage: two latitude bands (max 10° of width) by day Temporal coverage: 1992 – 2005, approx. 30 profiles per day Location (coordinates): -75° South to +75° North Accuracy: approx. 10%, deteriorates below 20 km altitude (Brühl et al., 1996)
SAGE-II O3 observations	Availability: NASA DAAC Spatial coverage: two latitude bands (max 10° of width) by day Temporal coverage: 1984 - 2005, approx. 30 profiles per day Location (coordinates): -75° South to +75° North Accuracy: approx. 10%, deteriorates below 20 km altitude

	<p align="center">GSE - PROMOTE 2 C6 Validation Report 3D Ozone Service</p>	<p>REF: PROMOTE-2 C6 ISSUE: 1.0 DATE: 19.06.2008 PAGE: 4 of 29</p>
---	--	---

	(Wang et al., 2002)
--	---------------------

Table 1.2-2 Data used for validation of the ROSE products

1.2.3 Validation of individual components

To balance *a priori* and observational errors a χ^2 (Chi-Square) correction is performed dynamically calculated from a three-day running mean. To check the consistency of results and analyse model/instrument bias Observation minus First-guess (OMF) residuals are stored along the ozone analysis and its errors. Additionally, comparisons of ozone and related trace gases to independent observations (ground based and satellites) are performed when data is available.

The most actual results concerning the October-March episode 2003/2004 are obtained from comparisons to HALOE occultation measurements. Ground based ozone soundings were performed to derive mean bias and rms errors. Two experiments have been conducted to assess the overall model performance (also in comparison to SACADA, see Section 0) and the impact of meteorological data (UKMO and ECMWF/GME). The quality of ozone analysis using offline chemistry-transport models depends strongly on the external wind and temperature fields. In fact, it was shown that ROSE ozone rms errors decrease by 30% when ECMWF/GME meteo data is applied. The GME forecast model was used to generate 24h forecasts starting with 00:00 GMT ECMWF analyses. This set-up is also used for the SACADA system. Validation results obtained by comparison to HALOE data on O₃, H₂O, NO_x, CH₄ and HCl within the altitude region 100 – 2 hPa are given in Table 1.2-3 HALOE HCl and NO_x were only considered above 56hPa due to poor data quality in lower altitude regions.

VALIDATION OF INDIVIDUAL COMPONENTS	
Quality assessment	
Monitoring of OMF residuals	Daily zonal mean observation minus first-guess (OMF) differences: zonal mean = $\sum OMF_i$, for all model longitudes i with observations
OMF error statistics for single pressure levels	Daily accumulated OMF differences for each model grid point: daily average = $\sum OMF_i$, for all observations i available
For Accuracy/Error bars	See Table Table 1.2-5 below(Quality Assessment and control procedures for ROSE)
Models/assimilation	

	<p align="center">GSE - PROMOTE 2 C6 Validation Report 3D Ozone Service</p>	<p>REF: PROMOTE-2 C6 ISSUE: 1.0 DATE: 19.06.2008 PAGE: 5 of 29</p>
---	--	---

ROSE	<p>Sensitive to different meteorological data sets</p> <p>Rejection of observational data which deviates by more than factor 10 from first-guess</p>																																																												
HALOE	<p>Morning and evening observations deteriorate rapidly below approx. 60 hPa (data withheld from comparisons)</p> <p>For NOX there is an increased scatter above 1 hPa (data withheld from comparisons)</p>																																																												
<p>Comparison of ROSE results to HALOE observations for October-March 2003/2004 using two different meteorological driver data</p> <p>HALOE HCl and NOx were only considered above 56hPa due to poor data quality in lower altitude regions</p>	<p>Global mean ROSE/UKMO c.t. HALOE (100-2 hPa)</p> <table border="1"> <thead> <tr> <th>obs</th> <th>#</th> <th>mean</th> <th>bias/%</th> <th>rms/%</th> </tr> </thead> <tbody> <tr> <td>O3</td> <td>48776</td> <td>5.10</td> <td>0.29</td> <td>13.71</td> </tr> <tr> <td>H2O</td> <td>48778</td> <td>5.05</td> <td>4.29</td> <td>9.30</td> </tr> <tr> <td>Nox</td> <td>41478</td> <td>7.79</td> <td>0.97</td> <td>26.30</td> </tr> <tr> <td>CH4</td> <td>48576</td> <td>4.26</td> <td>7.77</td> <td>15.19</td> </tr> <tr> <td>HCl</td> <td>41484</td> <td>1.82</td> <td>-9.02</td> <td>19.61</td> </tr> </tbody> </table> <p>ROSE/GME c.t. HALOE (100-2 hPa)</p> <table border="1"> <thead> <tr> <th>obs</th> <th>#</th> <th>mean</th> <th>bias/%</th> <th>rms/%</th> </tr> </thead> <tbody> <tr> <td>O3</td> <td>54252</td> <td>5.16</td> <td>1.64</td> <td>8.81</td> </tr> <tr> <td>H2O</td> <td>54254</td> <td>5.09</td> <td>5.01</td> <td>9.14</td> </tr> <tr> <td>Nox</td> <td>46137</td> <td>7.99</td> <td>2.73</td> <td>24.86</td> </tr> <tr> <td>CH4</td> <td>54050</td> <td>4.21</td> <td>7.49</td> <td>13.56</td> </tr> <tr> <td>HCl</td> <td>46142</td> <td>1.92</td> <td>-4.28</td> <td>15.23</td> </tr> </tbody> </table>	obs	#	mean	bias/%	rms/%	O3	48776	5.10	0.29	13.71	H2O	48778	5.05	4.29	9.30	Nox	41478	7.79	0.97	26.30	CH4	48576	4.26	7.77	15.19	HCl	41484	1.82	-9.02	19.61	obs	#	mean	bias/%	rms/%	O3	54252	5.16	1.64	8.81	H2O	54254	5.09	5.01	9.14	Nox	46137	7.99	2.73	24.86	CH4	54050	4.21	7.49	13.56	HCl	46142	1.92	-4.28	15.23
obs	#	mean	bias/%	rms/%																																																									
O3	48776	5.10	0.29	13.71																																																									
H2O	48778	5.05	4.29	9.30																																																									
Nox	41478	7.79	0.97	26.30																																																									
CH4	48576	4.26	7.77	15.19																																																									
HCl	41484	1.82	-9.02	19.61																																																									
obs	#	mean	bias/%	rms/%																																																									
O3	54252	5.16	1.64	8.81																																																									
H2O	54254	5.09	5.01	9.14																																																									
Nox	46137	7.99	2.73	24.86																																																									
CH4	54050	4.21	7.49	13.56																																																									
HCl	46142	1.92	-4.28	15.23																																																									
Comparisons to GAW Ozone Soundings	N/A																																																												

Table 1.2-3 Validation of individual components of the ROSE products

As mentioned in the table above, HALOE morning and evening observations deteriorate rapidly below approx. 60 hPa. For NOx there is also an increased scatter above 1 hPa. These data has been withheld from comparisons. HALOE is in general well suited for model assessments due to comparable vertical resolution within the stratosphere. Future comparisons will also include ground based ozone soundings. This will allow for a more continuous monitoring with respect to single locations. On the other hand, ozone sondes are only applicable below approx. 10 hPa.

As indicated in Table 1.2-3 assimilation results strongly depend on the quality of meteorological analyses driving the CTM calculations. Therefore, the product quality and applicability (usability) depend also on certain atmospheric conditions, e.g. low temperatures allowing PSC formation. The PSC parameterization method is a critical part of chemical model calculations. It depends on assumptions on temperature thresholds for

	<p align="center">GSE - PROMOTE 2 C6 Validation Report 3D Ozone Service</p>	REF: PROMOTE-2 C6 ISSUE: 1.0 DATE: 19.06.2008 PAGE: 6 of 29
---	--	--

PSC formation, PSC types and microphysical processes involved. ROSE currently employs the Ice-NAT scheme of Chipperfield *et al.* (1999). Future model upgrades foresee a transition to more elaborated Ice-NAT-STS parameterizations.

1.2.4 Validation against specifications and against user requirements

During phase II a second reanalysis of the 1996-2003 GOME/NNORSY time record has been completed making use of ECMWF 6h meteorological data (ERA40 until 2002) and more detailed error analysis. Therefore, the χ^2 correction applied in phase I was skipped, but can be reconsidered in phase III with new error data available. This error data will also help to improve SACADA results (see 1.3.4). Comparing both reanalyses to HALOE observations some improvements are clearly evident (see figure 1.2-1). For example, the increased RMS error level in 2000 is reduced to average values. Until 2001 there is in general a small reduction of RMS errors compared to the first reanalysis. However, in 2001 statistical deviations from HALOE are now higher. Bias values are still small but seem to increase with time with maximum values in 2003 (4%). With respect to latitude bands the most significant improvements are visible in the tropics.

*Requirements written in *Italics* are not compulsory for Phase 2

VALIDATION AGAINST SERVICE SPECIFICATIONS OF ROSE PRODUCTS			
No limitations/delays for compliance between theoretical and actual service specifications have been indicated by the service provider.			
VALIDATION AGAINST USER REQUIREMENTS ROSE PRODUCTS			
SPECIFICATION	S5	REQUIRED*	ACTUAL
Parameters (*=GSE-PRO2)	3D-O3R*: 3D gridded fields of synoptic ozone mixing ratios 3D-O3LS*: 3D gridded fields of daily accumulated chemical ozone loss rates as mixing ratios per day N/A 3D-O3PSC*: 3D gridded fields of synoptic PSC area densities		
Accuracy	3D-O3R*: rms < 15%, bias < 0.5% 3D-O3LS*: N/A 3D-O3PSC*: N/A	<5%	3D-O3R*: rms < 10%, bias < 2% 3D-O3LS*: N/A 3D-O3PSC*: N/A
Accuracy minimum	n.s.	<i>For O3: Mesosphere: 15%</i> <i>Stratosphere layers: 15%</i> <i>Total column: 5%</i>	n.s.
Accuracy target	n.s.	<i>For O3: Mesosphere: 3%</i> <i>Stratosphere layers: 3%</i> <i>Total column: 1%</i>	3D-O3R*: 10% (1 ppmv) 3D-O3LS: N/A 3D-O3PSC: N/A
Spatial coverage	Global 1000 to 0.3 hPa	Global	3D global (1000 – 0.3 hPa)



GSE - PROMOTE 2

C6 Validation Report 3D
Ozone Service

REF: PROMOTE-2 C6
ISSUE: 1.0
DATE: 19.06.2008
PAGE: 7 of 29

Horizontal resolution	2.5° x 3.7° lat-lon	2.8°x2.8° for stratosphere	2.5° x 3.7° lat-lon
Vertical resolution	Vertical 1.3 km	1 km	1.3 km
Grid/Projection	Lat-long coordinates on fixed pressure levels	Lat-long	Latitude-longitude coordinates on fixed pressure levels
Temporal coverage	1995-2005	1995-2005. <i>As long as possible (>20 years per record)</i>	1996-2003
Temporal resolution	Daily synoptic analysis every 6 h	Daily	Daily synoptic analysis every 6 h
User Interfaces			
PROMOTE Web	n.s.	Complete, operational and up to date	Complete, operational and up to date
ftp	n.s.	n.s.	n.s.
On demand	Email contact	n.s.	Email contact
Data formats and data delivery			
Data access	on demand	Downloadable from PROMOTE Web	on demand
Delivery Mode	Actual base products online (no NRT) depending on data availability, record offline	Online no NRT	no NRT
Delivery frequency	n.s.	When agreed with user. <i>At the end of every phase</i>	N/A
Data Format	HDF4, NetCDF	ASCII, HDF, CDF	HDF4, NetCDF
Historical archive	Reanalysis of ERS-2 and ENVISAT data since 1995	n.s.	Reanalysis of ERS-2 GOME data since 1996
Visualization	Quicklooks for single pressure levels (60, 20, 10 hPa)	n.s.	Quicklooks for single pressure levels (60, 20, 10 hPa)
REMARKS		No remarks	

*Requirements written in *Italics* are not compulsory for Phase 2

Table 1.2-4 Validation against specifications and against user requirements of ROSE Products

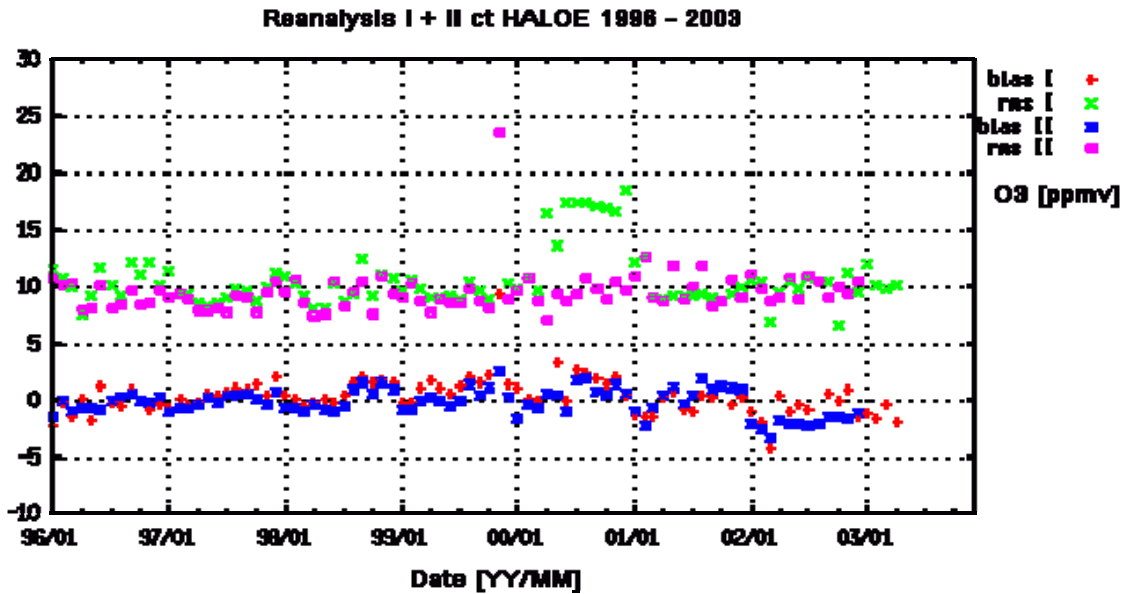


Figure 1.2-1: Global monthly mean results from comparison of GOME/NNORSY/ROSE reanalyses. Statistical (rms) and mean deviations (bias) from collocated observations are plotted for both reanalyses versions I and II. T

1.2.5 ROSE quality assessment and control

Service Delivery: Online delivery of 1996-2003 products until July, 2008				
SPECIFICATION	S5	REQUIRED*	ACTUAL	N checks/Delivery period
Quality checks	Continuous monitoring of OMF error residuals for observed species See Table 1.2-3	n.s.	Continuous assessment See Table 1.2-3	Online checks depend on data coverage (avg. 16000 per dday).
Product confidence data	n.s.	n.s.	HALOE, SAGEII	Mean data coverage 30 ozone profiles p.d.

	<p align="center">GSE - PROMOTE 2 C6 Validation Report 3D Ozone Service</p>	REF: PROMOTE-2 C6 ISSUE: 1.0 DATE: 19.06.2008 PAGE: 9 of 29
---	--	--

Error bar definition and representation	1 sigma	<i>Total error; 1 sigma error bar (standard deviation)</i>	Standard deviation	Monthly data base (approx. 1000 value pairs p.d.)
Representation of missing data	Data coverage and outliers are reported for 3D Ozone profile records	<i>Filled with higher order regression; cloud and event flags</i>	Data gaps indicated by high analysis error	Certain periods with reduced coverage: Jan, Mar, Jun 1996; Nov 1999; Feb, Jul 2000; Jan, Feb 2001; Jul 2003 onwards
Documentation of process failure	Convergence of chemical solver is reported	n.s.	Convergence of numerical solver for CTM	Convergence fulfilled; transport time step reduced for ECMWF analysis 2002-2003
Version control mechanisms and representation	Changes are reported, processor version number is increased – this is also indicated in HDF data set	<i>Number scheme to be defined in S5 Specifications</i>	GOME/NNOR SY V3; ROSE CTM V3; OI/KF V2	OI/KF update

*Requirements written in Italics are not compulsory for Phase 2

Table 1.2-5 Quality assessment and control procedures for ROSE

	<p align="center">GSE - PROMOTE 2</p> <p align="center">C6 Validation Report 3D Ozone Service</p>	<p>REF: PROMOTE-2 C6 ISSUE: 1.0 DATE: 19.06.2008 PAGE: 10 of 29</p>
---	---	---

1.3 SACADA Products

SACADA (Synoptic Analysis of Chemical constituents by Advanced Data Assimilation) provides long term 3D Records of reactive ozone chemistry. Trace gas observations from ERS-2 GOME/NNORSY, ENVISAL MIPAS, SCIAMACHY, GOMOS, MetOp IASI and GOME-2 trace gas profile and column data are assimilated into SACADA.

SACADA is a 4D-VAR system comparable to BASCOE (see Section 1.4) giving in principle more chemically consistent results than ROSE. Therefore, a transition from ROSE to SACADA is foreseen for project phase 2. Besides stratospheric ozone SACADA will also be used to generate daily active ClO_x and NO_x compounds for fixed local time.

Service is/will be operational since/after: N/A

Research partners: RIU, BIRA-IASB

Provider(s): DLR

Validation contact: Frank Baier (DLR)

1.3.1 SACADA Product Characterization

3D Gridded fields of ozone mixing ratios	
Parameter	Ozone Concentration
Typical range	0 – 10 ppmv
Determination of the typical range (Method, criteria)	maximum simulated mean value for single altitude
Units	ppbv
<i>Standards</i>	-
3D Gridded fields of ClO_x for fixed local time	
Parameter	
Typical range	0 – 1 ppbv
Determination of the typical range (Method, criteria)	maximum simulated mean value for single altitude
Units	ppbv
<i>Standards</i>	-
3D Gridded fields of NO_x for fixed local time	

	<p align="center">GSE - PROMOTE 2 C6 Validation Report 3D Ozone Service</p>	REF: PROMOTE-2 C6 ISSUE: 1.0 DATE: 19.06.2008 PAGE: 11 of 29
---	--	---

Parameter	-
Typical range	0 – 1 ppbv
Determination of the typical range (Method, criteria)	maximum simulated mean value for single altitude
Units	ppbv
<i>Standards</i>	-

Table 1.3-1 Characterization of SACADA products

1.3.2 Validation plan and validation data

Evaluation of SACADA performance and products is in an early stage. Extended validation of multi-year data records is foreseen for project phase 2. Currently results are available for the winter episode 2003/2004 only, also used for ROSE evaluation (see Section 1.2). Comparisons to HALOE and ground based observations are hampered by a strong HCl biased. This has been attributed to missing chlorine reactions with OH and CH₂O in the chemistry scheme. Respective reactions will be included during a model upgrade during project phase 1.

VALIDATION DATA	
Ground based observations	
Stations	N/A
<i>In-situ</i> observations	
NILU ozone sondes campaigns	Availability: NILU, 1997-2000, 2002-2004 Spatial coverage: n.a. Temporal coverage: approx. one sounding per week Location (coordinates): see NILU station list Accuracy: N/A
Model outputs	
ROSE-GOME	Availability: PROMOTE Spatial coverage: gobal Temporal coverage: 1996-2003 Location (coordinates): -90° South to +90° North Accuracy: <15%
Other EO data	

	<p align="center">GSE - PROMOTE 2 C6 Validation Report 3D Ozone Service</p>	<p>REF: PROMOTE-2 C6 ISSUE: 1.0 DATE: 19.06.2008 PAGE: 12 of 29</p>
---	--	--

<p>ENVISAT/GOMOS observations</p>	<p>Availability: Service d'Aéronomie (IPSL-SA) Spatial coverage: global Temporal coverage: 2002 until today Location (coordinates): n.a. Accuracy: 10 – 20% (for night and day measurements)</p>
<p>UARS/HALOE V19 O3 observations</p>	<p>Data availability and access: NASA DAAC Spatial coverage: two latitude bands (max 10° of width) by day Temporal coverage: 1992 - 2005 Location (coordinates): -75° South to +75° North Accuracy: 10%, deteriorates below 20 km altitude</p>

Table 1.3-2 Data used for validation of the SACADA Products

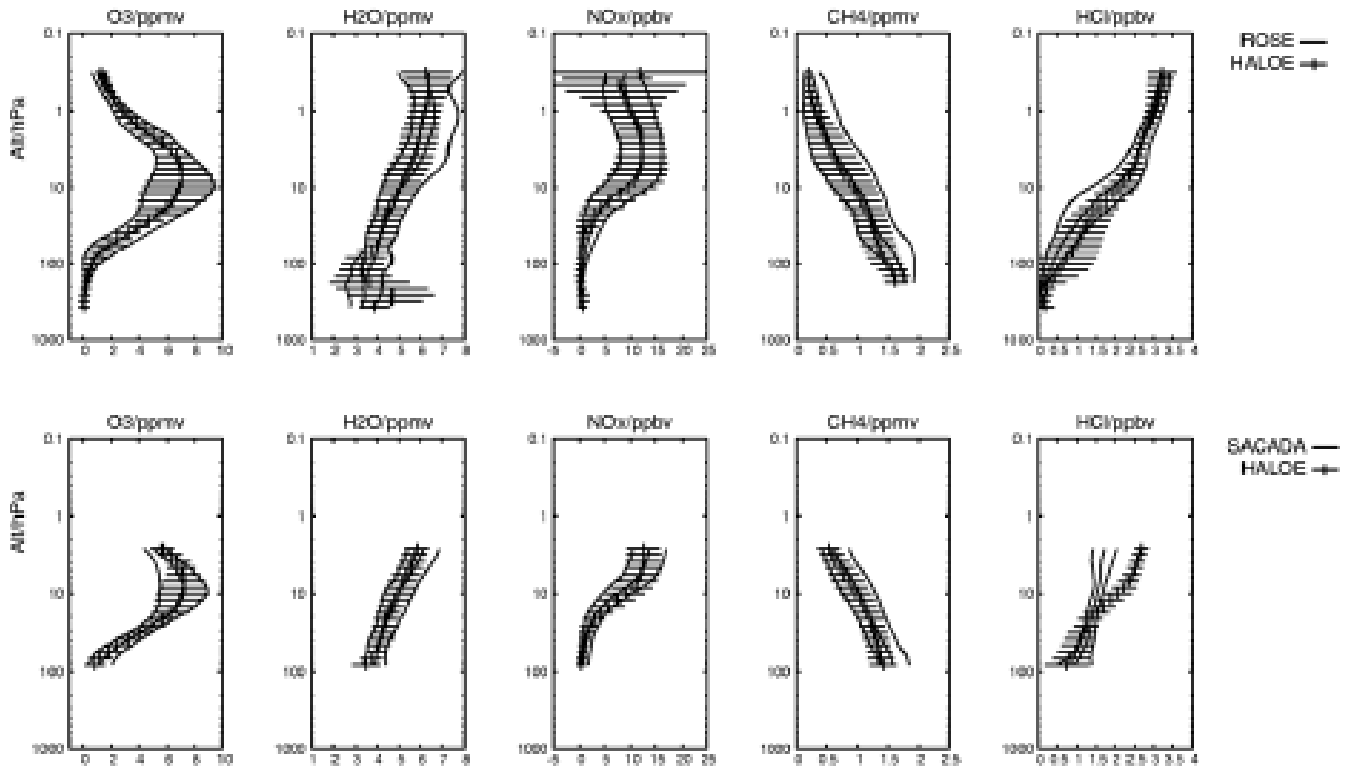


Figure 1.3-1: Global mean results showing a comparison of ROSE (first row) and SACADA (second row) results to respective HALOE observations covering the time period October – March 2003/2004. The indicated scatter (horizontal bars for observations and lines for model analyses) shows the standard deviation from the mean.

1.3.3 Validation of individual components

As mentioned above, current comparisons of SACADA products to independent observations are strongly affected by a model HCl deficit in the upper stratosphere. Because upper stratospheric ozone depends on HCl background concentrations actual

	<p align="center">GSE - PROMOTE 2 C6 Validation Report 3D Ozone Service</p>	<p>REF: PROMOTE-2 C6 ISSUE: 1.0 DATE: 19.06.2008 PAGE: 13 of 29</p>
---	--	--

comparisons show also a considerable ozone bias. In Table 1.3-3 results for the 100 – 2 hPa altitude regions for October – March 2003/2004 using HALOE observations are included. HALOE HCl and NO_x were only considered above 56hPa due to poor data quality in lower altitude regions. The current model set-up applies ECMWF/GME meteo data using GME to calculate 24h forecasts.

Basically, identical validation procedures are foreseen for both SACADA and ROSE results. Because complete ROSE results will be available at the end of project phase 1, they can be used to additionally assess SACADA performance and product quality.

For SACADA products the same chemistry-transport model issues and restrictions as discussed with respect to ROSE are found (see 1.2). In contrast to ROSE, sequential assimilation the 4 D-VAR schemes is more sensitive to model bias. In the case of the identified HCl deficit, this has been demonstrated by deliberately withdrawing the HCl producing reactions in ROSE. In addition, both models showed a strong HCl reduction. This effect was more pronounced in SACADA leading to lower ozone concentrations throughout the upper stratosphere.

VALIDATION OF INDIVIDUAL COMPONENTS	
Quality assessment	
Monitoring of OMF residuals	<p>Daily zonal mean observation minus first-guess (OMF) differences: zonal mean = $\sum OMF_i$, for all model longitudes i with observations</p> <p>Rejection of observational data which deviates by more than factor 10 from first-guess</p>
OMF error statistics for single pressure levels	Daily accumulated OMF differences for each model grid point: daily average = $\sum OMF_i$, for all observations i available
MODELS/ASSIMILATION	
ROSE	<p>ERS-2 GOME/NNORSY assimilated ozone record 1996-2003</p> <p>Comparisons to daily ozone mixing ratios</p>
BASCOE	<p>ENVISAT MIPAS assimilated ozone record 2002-2004</p> <p>Comparisons to daily ozone mixing ratios</p>
SACADA	HCl bias due to missing chlorine reactions with OH and CH ₂ O in the chemistry scheme
Comparison to GAW Ozone soundings (WOUDC)	Mean deviation from 69 ozone soundings <5% between 40 and 10 hPa, <10% for other altitudes

	GSE - PROMOTE 2 C6 Validation Report 3D Ozone Service	REF: PROMOTE-2 C6 ISSUE: 1.0 DATE: 19.06.2008 PAGE: 14 of 29
---	--	---

Comparison to GOMOS/ENVISAT	N/A																														
Comparison to UARS/HALOE (NASA)	HCl and NO _x were only considered above 56hPa due to poor data quality in lower altitude regions																														
	<p style="text-align: center;">SACADA c.t. HALOE (100–2 hPa)</p> <table border="1" style="margin-left: auto; margin-right: auto;"> <thead> <tr> <th></th> <th>obs</th> <th>mean</th> <th>bias/%</th> <th>rms/%</th> </tr> </thead> <tbody> <tr> <td>O₃</td> <td>65582</td> <td>4.99</td> <td>-0.43</td> <td>13.09</td> </tr> <tr> <td>H₂O</td> <td>65584</td> <td>5.11</td> <td>4.47</td> <td>10.00</td> </tr> <tr> <td>No_x</td> <td>55761</td> <td>6.85</td> <td>-11.75</td> <td>24.25</td> </tr> <tr> <td>CH₄</td> <td>65452</td> <td>4.05</td> <td>6.49</td> <td>12.45</td> </tr> <tr> <td>HCl</td> <td>55768</td> <td>1.27</td> <td>-59.36</td> <td>75.64</td> </tr> </tbody> </table> <p style="text-align: center;">Global mean/ppmv, bias/ppmv (SACADA-HALOE) and rms/% results</p>		obs	mean	bias/%	rms/%	O ₃	65582	4.99	-0.43	13.09	H ₂ O	65584	5.11	4.47	10.00	No _x	55761	6.85	-11.75	24.25	CH ₄	65452	4.05	6.49	12.45	HCl	55768	1.27	-59.36	75.64
	obs	mean	bias/%	rms/%																											
O ₃	65582	4.99	-0.43	13.09																											
H ₂ O	65584	5.11	4.47	10.00																											
No _x	55761	6.85	-11.75	24.25																											
CH ₄	65452	4.05	6.49	12.45																											
HCl	55768	1.27	-59.36	75.64																											

Table 1.3-3 Validation of individual components of SACADA products

1.3.4 Validation against specifications and against user requirements

In phase II SACADA has been updated to version 2.0. Among other improvements to the CTM, the number of chemical species and reactions were increased. For example, the OH+ClO → HCl+O₂ reaction was added to increase upper stratospheric HCl values. To allow for the assimilation of ozone columns from the new GOME-2 instrument an additional observation operator has been developed. GOME-2 analysis results are available since late 2007. The offline processing of GOME/NNORSY data has been started recently. Completion of the 1996-2003 period is expected until the end of 2008. First comparisons to ROSE reanalysis are shown in figure 1.3-2.

*Requirements written in *Italics* are not compulsory for Phase 2

VALIDATION AGAINST SERVICE SPECIFICATIONS FOR SACADA PRODUCTS			
No limitations/delays for compliance between theoretical and actual service specifications have been indicated by the service provider.			
VALIDATION AGAINST USER REQUIREMENTS FOR SACADA PRODUCTS			
SPECIFICATION	S5	REQUIRED*	ACTUAL
Parameters *-GSE-PRO2	3D-O3S: 3D Gridded fields of ozone mixing ratios 3D-Clx: <i>3D Gridded fields of ClO_x for fixed local time</i> 3D-NO _x : <i>3D Gridded fields of NO_x for fixed local time</i>		
Accuracy	3D-O3S: rms<15%, bias <1% 3D-Clx: rms<25%, bias <1% 3D-NO _x : rms<25%, bias <1%	n.s.	3D-O3S: rms<15%, bias <1% 3D-Clx: N/A 3D-NO _x :



GSE - PROMOTE 2

C6 Validation Report 3D
Ozone Service

REF: PROMOTE-2 C6
ISSUE: 1.0
DATE: 19.06.2008
PAGE: 15 of 29

			rms<25%, bias <1%
Accuracy minimum	n.s.	<i>For O3: Mesosphere: 15% Stratosphere layers: 15% Total column: 5%</i>	n.s.
Accuracy target	n.s.	<i>For O3: Mesosphere: 3% Stratosphere layers: 3% Total column: 1%</i>	3D-O3S: rms<10%, bias <1% 3D-Clx: rms<25%, bias <1% 3D-NOx: rms<25%, bias <1%
Spatial coverage	3D Global 1000-0.1 hPa	Global	3D Global 1000- 0.1 hPa
Horizontal resolution	250 Km (truncated to 2.5°)	<i>2.8°x2.8°; 50 Km for lower Troposphere</i>	250 Km (truncated to 2.5°)
Vertical resolution	1.5 Km (lower Stratosphere)	<i>1 km</i>	1.5 Km (lower Stratosphere)
Grid/Projection	Interpolated on Lat-long grid from original icosahedron grid on sigma-pressure levels	<i>Lat-long</i>	Interpolated on Lat-long grid from original icosahedron grid on sigma-pressure levels
Temporal coverage	1995-2005	<i>As long as possible (>20 years per record)</i>	2003-2004
Temporal resolution	Daily synoptic and fixed local time analysis every 6 h	Daily	Daily synoptic and fixed local time analysis every 6 h
User Interfaces			
PROMOTE Web	Complete, operational and up to date	<i>Complete, operational and up to date</i>	Complete, operational and up to date
On demand	Email contact	n.s.	Email contact
Data formats and data delivery			
Data availability	1996-2005	n.s.	2003-2004

	<p align="center">GSE - PROMOTE 2 C6 Validation Report 3D Ozone Service</p>	REF: PROMOTE-2 C6 ISSUE: 1.0 DATE: 19.06.2008 PAGE: 16 of 29
---	--	---

Data access	n.s.	On demand <i>Freely downloadable from PROMOTE Web</i>	On demand
Delivery Mode	Records offline some actual base products online (no NRT)	<i>Online (no NRT)</i>	no NRT
Delivery frequency	n.s.	Data agreed with user. <i>End of Phase 1</i>	agreed with user
Data Format	HDF4, NetCDF	<i>ASCII, HDF, CDF</i>	HDF4, NetCDF
Historical archive	Reanalysis of ERS-2 and ENVISAT since 1995	n.s.	Reanalysis of ERS-2 and ENVISAT since 1995
Visualization	Quicklooks for single pressure levels (60, 20, 10 hPa) in different projections. HDF4, NetCDF.	n.s.	Quicklooks for single pressure levels (60, 20, 10 hPa) in different projections. HDF4, NetCDF.

*Requirements written in *Italics* are not compulsory for Phase 2

Table 1.3-4 Validation of SACADA products against specifications and against user requirements

1.3.5 SACADA quality assessment and control

Service Delivery: Online delivery of 1996-2003 period is ongoing (t.b. finished until Dec, 2008)
--

	<p align="center">GSE - PROMOTE 2 C6 Validation Report 3D Ozone Service</p>	REF: PROMOTE-2 C6 ISSUE: 1.0 DATE: 19.06.2008 PAGE: 17 of 29
---	--	---

SPECIFICATION	S5	REQUIRED*	ACTUAL	checks/Delivery period
Quality checks	Continuous monitoring of OMF error residuals for observed species See Table 1.3-3.	n.s.	Continuous assessment See Table 1.2-3	Online checks depend on data coverage (avg. 16000 p.d.).
Product confidence data	n.s.	n.s.	HALOE, SAGEII	Mean data coverage 30 ozone profiles p.d.
Error bar definition and representation	1 sigma	<i>Total error; 1 sigma error bar (standard deviation)</i>	Standard deviation	Monthly data base (approx. 1000 value pairs p.d.)
Representation of missing data	Data coverage and outliers are reported for 3D Ozone profile records	<i>Filled with higher order regression; cloud and event flags</i>	Data gaps indicated by high analysis error	Certain periods with reduced coverage: Jan, Mar, Jun 1996; Nov 1999; Feb, Jul 2000; Jan, Feb 2001; Jul 2003 onwards
Documentation of process failure	Convergence of chemical solver is reported	n.s.	convergence of numerical solver for CTM and 4DVAR	n.s.
Version control mechanisms and representation	Changes are reported, processor version number is increased – this is also indicated in HDF data set	<i>Number scheme to be defined in S5 Specifications</i>	GOME/NNORS Y V3; SACADA 2.0	CTM update

*Requirements written in *Italics* are not compulsory for Phase 2

Table 1.3-5 Quality assessment and control procedures for SACADA



GSE - PROMOTE 2

C6 Validation Report 3D
Ozone Service

REF: PROMOTE-2 C6
ISSUE: 1.0
DATE: 19.06.2008
PAGE: 18 of 35

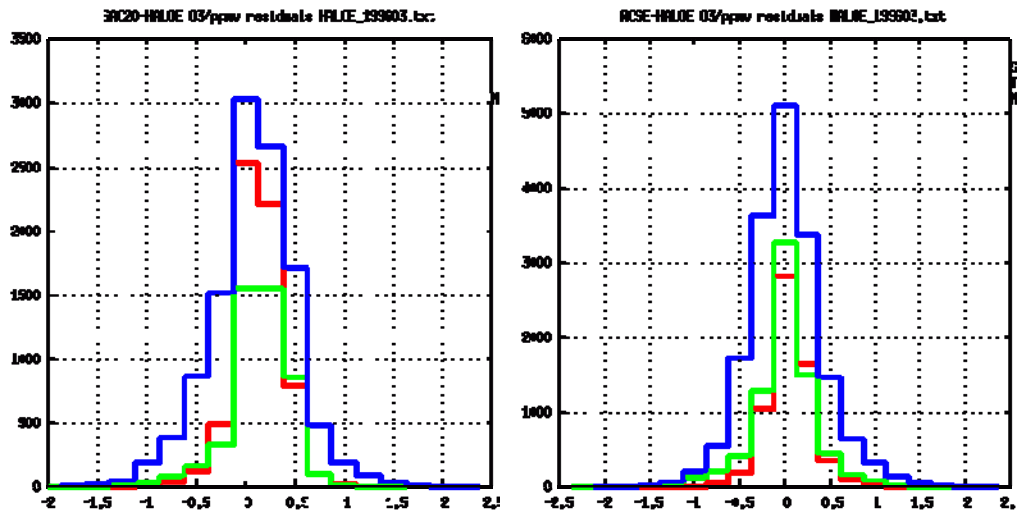


Figure 1.3-2: Global mean results for March 1996 SACADA 4DVAR (left) and ROSE OI/KF (right) analysis, showing histograms of ozone deviations for collocated HALOE observations with respect to three latitude bands: Southern Hemisphere (red, $>30^{\circ}\text{S}$), Tropics (green) and Northern Hemisphere (blue, $>30^{\circ}\text{N}$). Standard deviations are comparable while SACADA results show a small positive bias c.t. ROSE.

	<p align="center">GSE - PROMOTE 2 C6 Validation Report 3D Ozone Service</p>	<p>REF: PROMOTE-2 C6 ISSUE: 1.0 DATE: 19.06.2008 PAGE: 19 of 35</p>
---	--	--

1.4 BASCOE Products

BASCOE products consist of vertically resolved global synoptic analysis of stratospheric ozone mixing ratios (3D ozone) and total inorganic chlorine (CLy). Analyses are derived by 4D-Var assimilation of UARS/MLS and MIPAS trace gas observations. To check the consistency of results and analyse model/instrument bias Observation minus First-guess (OMF) residuals are stored along the ozone analysis and its errors. Additionally comparisons of ozone and related trace gases to independent observations (ground based and satellites) are performed.

Service is/will be operational since/after: N/A

Research partners: DLR

Provider(s): BIRA-IASB

Validation contact: Quentin Errera (BIRA-IASB)

1.4.1 BASCOE Product Characterization

3D Gridded fields of ozone mixing ratios	
Parameter	Ozone volume mixing ratio (vmr)
Typical range	0-12 ppmv
Determination of the typical range (Method, criteria)	N/A
Units	ppmv
<i>Standards</i>	-
3D Gridded fields of CLy for fixed local time	
Parameter	CLy volume mixing ratio (vmr)
Typical range	N/A
Determination of the typical range (Method, criteria)	N/A
Units	ppbv
<i>Standards</i>	-

Table 1.4-1 Characterization of BASCOE Products

	<p align="center">GSE - PROMOTE 2 C6 Validation Report 3D Ozone Service</p>	<p>REF: PROMOTE-2 C6 ISSUE: 1.0 DATE: 19.06.2008 PAGE: 20 of 35</p>
---	--	--

1.4.2 Validation plan and validation data

Evaluation of BASCOE ozone from MIPAS assimilation, started during phase 1, is now summarized in Errera et al. (2008). The uncertainties of the ozone analyses have been estimated using observations from HALOE and POAM-III. In general, the bias does not exceed $\pm 15\%$ with a standard deviation below 15%. They are exceptions where these values are not valid. At the tropopause, the bias and standard deviation range between $+30\pm 30\%$ (Poles) and $+45\pm 70\%$ (Tropics). During the 2003 ozone hole, observed values are very low and relative differences become meaningless. In absolute units, bias and standard deviation are around $-3\pm 3 \cdot 10^{11}$ molec/cm³ at 70 hPa (to compared to absolute value $4 \cdot 10^{12}$ molec/cm³ outside ozone hole conditions). During the 2002 Austral Spring, an important disagreement is found between BASCOE and independent observations. It happened that the horizontal resolution of BASCOE (5° lon by 3.75° lat) is too coarse to reproduce accurately the vortex split and, hence, the ozone depletion.

Evaluation of BASCOE ozone from UARS/MLS assimilation has started in phase 2. This is been done using independent data from HALOE, ozonesondes and groundbased lidar observations. Quantitative assessment of ozone analyses is not yet available. However, qualitatively, it could be mention that: (1) in general, *i.e.* outside the polar vortex and the tropopause region, BASCOE agree well with independent observations, with the tendency by be biased high (e.g. Figure X1). In the polar vortex, BASCOE overestimates the observations, probably due to its coarse resolution and the (too) simple PSC parameterization (see Figure X2). Moreover, the departure between BASCOE and independent observations increase in time. This is partly due to : (1) the decreasing number of observed days by MLS throughout the mission (from ~320 in 1992 to only 68 in 1999) combining with the decrease of data quality after mid-1997 due to the cessation of the radiometer providing temperature and (2) the coarse BASCOE resolution combining with the simple PSC parameterization. Finally, at the tropopause, BASCOE overestimates independent observations (see Figure X1).

Evaluation of BASCOE Cly from MIPAS and UARS/MLS is forseen for phase 3.

Data used for the validation of the BASCOE products are summarized in Table 1.4-2 below.

VALIDATION DATA FOR BASCOE PRODUCTS	
Ground based observations	
N/A	N/A
<i>In-situ</i> observations	
Ozone sondes	See Geer <i>et al.</i> (2006)

	<p align="center">GSE - PROMOTE 2 C6 Validation Report 3D Ozone Service</p>	REF: PROMOTE-2 C6 ISSUE: 1.0 DATE: 19.06.2008 PAGE: 21 of 35
---	--	---

NDACC Ozone sondes	Availability: ? Spatial coverage: N/A Temporal coverage: N/A Location (coordinates): -90° South to +90° North Accuracy: N/A
NDACC Lidar	Availability: ? Spatial coverage: N/A Temporal coverage: N/A Location (coordinates): -90° South to +90° North Accuracy: N/A
Other EO Data	
MIPAS	See Geer <i>et al.</i> (2006)
TOMS	See Geer <i>et al.</i> (2006)
UARS/HALOE V19 O ₃ observations	Availability: web Spatial coverage: two latitude bands (max 10° of width) by day Temporal coverage: Sep 1991 – Nov 2005 Location (coordinates): -75° South to +75° North Accuracy: >15% below 22 km in the Tropics; 4-12% throughout the rest of the stratosphere (Morris <i>et al.</i> , 2002, <i>JGR</i>)
UARS/HALOE V19 HCl observations	Availability: NASA DAAC Spatial coverage: two latitude bands (max 10° of width) by day Temporal coverage: Sep 1991 – Nov 2005, approx. 30 profiles per day Location (coordinates): -75° South to +75° North Accuracy: 9-18% (Russell <i>et al.</i> , 1996, <i>JGR</i>)
POAM-III O ₃ observations	Availability: web Spatial coverage: two latitude bands around the Poles Temporal coverage: 1998 – 2005, approx. 30 profiles per day Location (coordinates): -65° to -85° (SH); +55° to +70° (NH) Accuracy: <5% from 13 to 60 km (Randall <i>et al.</i> , 2003, <i>JGR</i>)

Table 1.4-2 Data used for validation of BASCOE Products

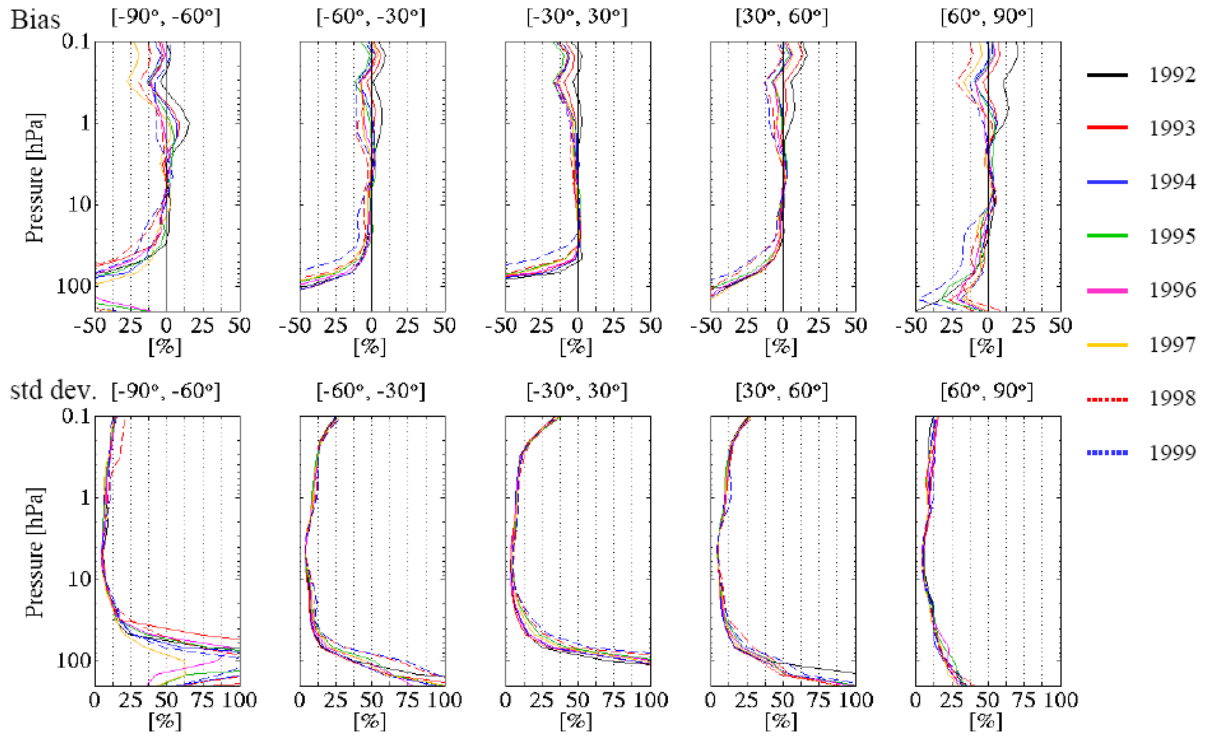


Figure 1.4-1 Comparison between BASCOE Ozone analyses from UARS/MLS assimilation and independent HALOE observations (see parameter Z_MEAN_LAT_OMA and Z_STD_LAT_OMA in section 2.2.3) from 1992 to 1999.

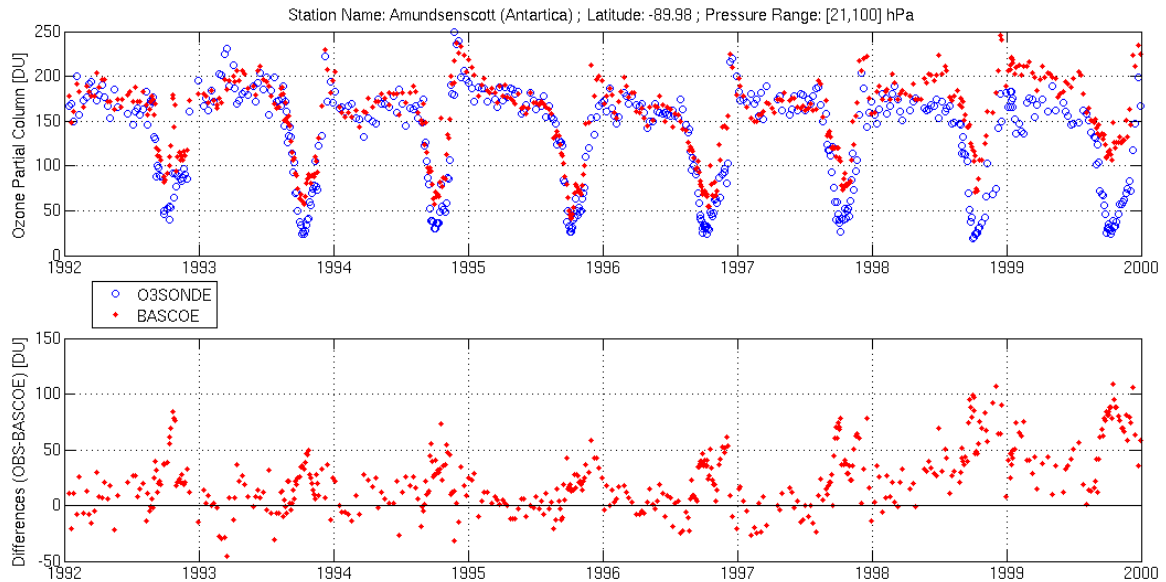


Figure 1.4-2 Comparison between BASCOE Ozone analyses from UARS/MLS assimilation and independent ozonesondes observations at South Pole at 68 hPa for the time period [1992-1999].

	<p align="center">GSE - PROMOTE 2 C6 Validation Report 3D Ozone Service</p>	<p>REF: PROMOTE-2 C6 ISSUE: 1.0 DATE: 19.06.2008 PAGE: 23 of 35</p>
---	--	--

1.4.3 Validation of individual components

Table 1.4-3 provides a detailed description of the parameters used for the validation as well as a summary of the results obtained after comparing HALOE and BASCOE.

VALIDATION OF INDIVIDUAL COMPONENTS FOR BASCOE PRODUCTS	
Quality assessment for BASCOE Products	
Instrument monitoring	Independent data sets from non-assimilated instruments (e.g. HALOE) are monitored by BASCOE, <i>i.e.</i> BASCOE state is stored in the observation space of non-assimilated instrument. Our monitoring method follows these rules: (1) at each BASCOE time step (30 min), seek any occurrence of independent data. If any occurrence is found, (2) make a tri-linear interpolation of BASCOE at every location of the profiles (lon, lat, alt) for every observed species (only profiles are considered). This monitoring is done during the first and last 24 hours run of the minimization and is used to calculate the observation minus forecast and analysis, respectively (<i>i.e.</i> OMF and OMA).
OMA, OMF	Observation Minus Analysis, Observation Minus Forecast: $OMA=(O-A);$ $OMF=(O-F);$ Where: O is the observed vmr, A is the analysis vmr in the observation space (see Instrument monitoring), F is the forecast vmr in the observation space (see Instrument monitoring).
DAY_MEAN_SS_OM A, DAY_MEAN_SR_OM A, DAY_STD_SS_OMA, DAY_STD_SR_OMA (Also for _OMF)	For each day, each occultation mode (sunset or sunrise) and each pressure layer, the mean and standard deviation between observations and analysis is calculated as: $Mean(OMA) = 100 \times \frac{\sum_{i=1}^N (O_i - A_i)}{\sum_{i=1}^N O_i}, \text{ in } \%$ $STD(OMA) = 100 \times \frac{\sqrt{\frac{1}{N-1} \sum_{i=1}^N (O_i - A_i)^2}}{\sum_{i=1}^N O_i}, \text{ in } \%$ N being the number of used observations. We use 13 pressure ranges, the boundary being defined as: [0.1, 0.147, 0.316, 0.681, 1.47, 3.16, 6.81, 14.7,



GSE - PROMOTE 2
C6 Validation Report 3D
Ozone Service

REF: PROMOTE-2 C6
 ISSUE: 1.0
 DATE: 19.06.2008
 PAGE: 24 of 35

	<p>31.6, 68.1, 147, 316, 681, 1000] hPa.</p> <p>This diagnostic is only available for occultation instruments (HALOE, SAGE-II).</p> <p>Obviously, these parameters only consider observation of the same constituent.</p>
<p>DAY_MEAN_LAT_OMA, DAY_MEAN_LAT_OMA, DAY_STD_LAT_OMA, DAY_STD_LAT_OMA</p> <p>(Also for _OMF)</p>	<p>For each day, each latitude band and each pressure layer, the mean and standard deviation between observations and analysis is calculated as:</p> $Mean(OMA) = 100 \times \frac{\sum_{i=1}^N (O_i - A_i)}{\sum_{i=1}^N O_i}, \text{ in } \%$ $STD(OMA) = 100 \times \frac{\sqrt{\frac{1}{N-1} \sum_{i=1}^N (O_i - A_i)^2}}{\sum_{i=1}^N O_i}, \text{ in } \%$ <p>N being the number of used observations. We use 13 pressure ranges, the boundary being defined as: [0.1, 0.147, 0.316, 0.681, 1.47, 3.16, 6.81, 14.7, 31.6, 68.1, 147, 316, 681, 1000] hPa. We use 5 latitude band defined as: [-90°, -60°], [-60°, -30°], [-30°, 30°], [30°, 60°], [60°, 90°] and [-90°, 90°].</p> <p>Obviously, these parameters only consider observation of the same constituent.</p>
<p>TS_MEAN_SS_OMA, TS_MEAN_SR_OMA, TS_STD_SS_OMA, TS_STD_SR_OMA</p> <p>(Also for _OMF)</p>	<p>Time series of daily Mean(OMA) and STD(OMA) for sunset or sunrise occultation and for a given pressure range. Note that the pressure range should belong to the boundary pressure defined above but more than one layer can be reconsidered.</p> <p>Obviously, these parameters only consider observation of the same constituent.</p>
<p>Z_MEAN_SS_OMA, Z_MEAN_SR_OMA, Z_STD_SS_OMA, Z_STD_SR_OMA</p> <p>(Also for _OMF)</p>	<p>Profile of the Monthly/Seasonal Mean(OMA) and STD(OMA) for a given occultation mode.</p> <p>Obviously, these parameters only consider observation of the same constituent.</p>
<p>TS_MEAN_LAT_OMA, TS_MEAN_LAT_OMA, TS_STD_LAT_OMA,</p>	<p>Time series of daily Mean(OMA) and STD(OMA) a given latitude band and for a given pressure range. Note that the pressure range should belong to the boundary pressure defined above but more than one layer can be reconsidered. Idem for the latitude.</p>



GSE - PROMOTE 2

C6 Validation Report 3D
Ozone Service

REF: PROMOTE-2 C6
ISSUE: 1.0
DATE: 19.06.2008
PAGE: 25 of 35

TS_STD_LAT_OMA (Also for _OMF)	Obviously, these parameters only consider observation of the same constituent.																									
Z_ MEAN_LAT_OMA, Z_MEAN_LAT_OMA, Z_STD_LAT_OMA, Z_STD_LAT_OMA (Also for _OMF)	Profile of the Monthly/Seasonal Mean (OMA) and STD(OMA) for a given latitude band. Note that the given latitude band should belong to those predefined above. Obviously, these parameters only consider observation of the same constituent.																									
BIAS_OMA (Also for _OMF)	Bias (in %) between analysis and independent observation can be estimates from average the daily mean along a given period. It correspond to: $\text{BIAS} = \text{MEAN}(\text{DAY}_1\text{-MEAN_}_\text{OMA}, \dots, \text{DAY}_N\text{-MEAN_}_\text{OMA})$ In time, it can consider (1) the whole temporal set of data (global), (2) an annual set of data (yearly), (3) a seasonal set of data (seasonal), (4) a monthly set of data (monthly), ... It can also consider only sunrise or only sunset or both occultation mode, one latitude band or more, one pressure layer or more, ...																									
STD_BIAS_OMF	Standard deviation (in %) of BIAS parameter: $\text{STD} = \text{STD}(\text{DAY}_1\text{-MEAN_}_\text{OMA}, \dots, \text{DAY}_N\text{-MEAN_}_\text{OMA})$																									
Models/assimilation																										
MIPAS assimilation	BASCOE version v3q33 (phase 1), v4q30 (phase 2)																									
	BASCOE O3 analyses validation&intercomparison: See Geer <i>et al.</i> , 2006																									
	BASCOE H2O analyses intercomparison with ECMWF: see Lahoz <i>et al.</i> , 2007																									
	BASCOE analyses of HNO3 and N2O validation wrt FTIR ground-based observation: see Vigoroux <i>et al.</i> , 2007																									
Estimated uncertainties based on mean bias (BIAS_OMA) and its standard deviation (STD_BIAS_OMA) between HALOE and BASCOE v4q30 and between BASCOE v4q30 and POAM-III for O3	<table border="1"> <thead> <tr> <th>Altitude</th> <th>Poles^a</th> <th>Mid Latitudes^b</th> <th>Tropics^c</th> <th>2003 Ozone hole^d</th> </tr> </thead> <tbody> <tr> <td>0.5 hPa</td> <td>-15±15</td> <td>-7±10</td> <td>-10±7</td> <td>-</td> </tr> <tr> <td>10 hPa</td> <td>+3±7</td> <td>+3±5</td> <td>+2±5</td> <td>-</td> </tr> <tr> <td>70 hPa</td> <td>+11±12</td> <td>+10±13</td> <td>+4±30</td> <td>-3±3×10¹¹ molec/cm³</td> </tr> <tr> <td>Tropopause^e</td> <td>+30±30</td> <td>+40±80</td> <td>+45±70</td> <td>-</td> </tr> </tbody> </table> ^a poleward of 60° N and 60° S ; ^b 30° N–60° N and 60° S–30° S; ^c 30° S–30° N; ^d poleward of 60° S; ^e 100 hPa at the Tropics, 200 hPa at the Extra-Tropics.	Altitude	Poles ^a	Mid Latitudes ^b	Tropics ^c	2003 Ozone hole ^d	0.5 hPa	-15±15	-7±10	-10±7	-	10 hPa	+3±7	+3±5	+2±5	-	70 hPa	+11±12	+10±13	+4±30	-3±3×10 ¹¹ molec/cm ³	Tropopause ^e	+30±30	+40±80	+45±70	-
Altitude	Poles ^a	Mid Latitudes ^b	Tropics ^c	2003 Ozone hole ^d																						
0.5 hPa	-15±15	-7±10	-10±7	-																						
10 hPa	+3±7	+3±5	+2±5	-																						
70 hPa	+11±12	+10±13	+4±30	-3±3×10 ¹¹ molec/cm ³																						
Tropopause ^e	+30±30	+40±80	+45±70	-																						

	GSE - PROMOTE 2 C6 Validation Report 3D Ozone Service	REF: PROMOTE-2 C6 ISSUE: 1.0 DATE: 19.06.2008 PAGE: 26 of 35
---	--	---

BASCOE Validation against SAGE II	N/A
--------------------------------------	-----

Table 1.4-3 Validation of individual components of BASCOE Products

1.4.4 Validation against specifications and against user requirements

Requirements in *Italics* are not compulsory for Phase 2

VALIDATION AGAINST SERVICE SPECIFICATIONS OF BASCOE PRODUCTS			
Indicate limitations/delays for compliance between theoretical and actual service specifications.			
VALIDATION AGAINST USER REQUIREMENTS			
SPECIFICATION	S5	REQUIRED*	ACTUAL
Product(s)	-3D Gridded fields of ozone mixing ratios [3D-O3B*] -3D gridded fields of Cly for fixed local time [3D-CLY*]		
Accuracy O ₃	RMS [3D-O3B*]<35% Bias [3D- O3B *]<10%	<5%	See Table 1.4-3 ¹
Accuracy Cl _y	RMS [3D-CLY*] N/A Bias [3D- CLY*] N/A	-	N/A
Accuracy minimum O ₃	n.s.	<i>For O3:</i> <i>Troposphere: 20%</i> <i>Mesosphere: 15%</i> <i>Stratosphere: 15%</i> <i>Total column: 5%</i>	See Table 1.4-3 (note that the altitude pressure is rather different)
Accuracy minimum Cl _y	n.s.	n.s.	N/A
Accuracy target O ₃	-	<i>For O3:</i> <i>Troposphere layers: 3%</i> <i>Troposphere column: 5%</i> <i>Mesosphere: 3%</i> <i>Stratosphere layers: 3%</i> <i>Total column: 1%</i>	idem above
Accuracy target Cl _y	n.s.	n.s.	N/A
Spatial coverage	Global (1000-0.1 hPa)	Global	Global (1000-0.1 hPa)
Horizontal resolution	550(lon)x400(lat) Km ² truncated to 5°x3.75°	2.8°x2.8°; 50 Km for lower Troposphere	550(lon)x400(lat) Km ² truncated to 5°x3.75°

¹ Here, Standard deviation is given instead of RMS.



GSE - PROMOTE 2

C6 Validation Report 3D
Ozone Service

REF: PROMOTE-2 C6
ISSUE: 1.0
DATE: 19.06.2008
PAGE: 27 of 35

Vertical resolution	1.5 Km (lower stratosphere) 37 vertical levels	1 km	1.5 Km (lower stratosphere) 37 vertical levels
Grid/Projection	Hybrid sigma-p grid	T42	Interpolated on latitude-longitude grid on sigma-pressure levels
Temporal coverage	1992-1999 (UARS/MLS) 2002-2004 (ENVISAT/MIPAS)	1992-1999. <i>As long as possible; optimal if more than 20 following years</i>	1992-1999 (UARS/MLS analyses) Jul 2002 - Mar 2004 (21 months, MIPAS analyses)
Temporal resolution	Daily synoptic and fixed local time analysis every 6 hours	Daily	Daily
User Interfaces			
PROMOTE Web	Operational, complete and up-to-date	Operational, complete and up-to-date	Operational, incomplete and up-to- date
On demand	n.s.	n.s.	Available
Data formats and data delivery			
Data availability	UARS/MLS: 1992- 1999; MIPAS: October 2002 to March 2004	1992-1999. <i>Long-term records; as long as possible; >20 years</i>	UARS/MLS: 1992- 1999; MIPAS: July 2002 to March 2004
Data access	n.s.	n.s.	online via www
Delivery Mode	Records offline/actual base products online (no NRT)	Online (no NRT)	Online
Delivery frequency	On demand	Once per phase	One per phase
Data Format	HDF4	ASCII, HDF, CDF	HDF4 (netCDF on request)
Historical archive	Reanalysis available since 1992	n.s.	Phase 1: ENVISAT/MIPAS Oct 2002–Mar 2004 (BASCOE v3q33)

	<p align="center">GSE - PROMOTE 2 C6 Validation Report 3D Ozone Service</p>	<p>REF: PROMOTE-2 C6 ISSUE: 1.0 DATE: 19.06.2008 PAGE: 28 of 35</p>
---	--	--

			<p align="center">Phase 2: ENVISAT/MIPAS Jul 2002-Mar 2004 (BASCOE v4q30) UARS/MLS 1992- 1999 (BASCOE v4q09)</p>
Visualization	Quicklooks for single pressure levels (60, 20, 10 hPa) in different projections	n.s.	n.a.
REMARKS			
No remarks			

*Requirements written in *Italics* are not compulsory for Phase 2

Table 1.4-4 Validation of BASCOE against specifications and against user requirements

	<p align="center">GSE - PROMOTE 2 C6 Validation Report 3D Ozone Service</p>	REF: PROMOTE-2 C6 ISSUE: 1.0 DATE: 19.06.2008 PAGE: 29 of 35
---	--	---

1.4.5 Quality assessment and control procedures

SPECIFICATION	S5	REQUIRED*	ACTUAL	N checks/Delivery period
Quality checks	Continuous monitoring of OMF error residuals for observed species See Table 1.4-3	n.s.	Yes, OIQC, see Errera et al., 2008	One check per assimilated day
Product confidence data	n.s.	n.s.	n.s.	n.s.
Error bar definition and representation	1 sigma	<i>Total error; 1 sigma error bar (standard deviation)</i>	Bias and Std vs indep. obs.	See Table 1.4-3
Representation of missing data	Data coverage and outliers are reported for 3D Ozone profile records	<i>Filled with higher order regression; cloud and event flags</i>	No output missing data. If input missing data, output is from CTM run (no assim.)	n.s.
Documentation of process failure	Convergence of chemical solver is reported	n.s.	N/A	N/A
Version control mechanisms and representation	Changes are reported, processor version number is increased – this is also indicated in HDF data set	<i>Number scheme to be defined in S5 Specifications</i>	BASCOE version number provide with analyses	UARS/MLS assim.: v4q09; MIPAS assim.: v4q30

*Requirements written in *Italics* are not compulsory for Phase 2

Table 1.4-5 Quality assessment and control procedures for the BASCOE products

	<p align="center">GSE - PROMOTE 2 C6 Validation Report 3D Ozone Service</p>	<p>REF: PROMOTE-2 C6 ISSUE: 1.0 DATE: 19.06.2008 PAGE: 30 of 35</p>
---	--	--

1.5 References

1.5.1 Electronic references and online data access paths

This service is briefly described on the promote web site: <http://www.gse-promote.org>
(→ 3D ozone Stratospheric Ozone Profile Record)

BASCOE ozone analyses from MIPAS and UARS/MLS are available through:
www.bascoe.oma.be/promote

ROSE/DLR and SACADA are assimilation systems basically used at DLR for the processing of GOME, SCIAMACHY and MIPAS trace gas observations. Background information on the ROSE assimilation service can be found at WDC-RSAT pages: http://wdc.dlr.de/data_products/SERVICES. Access to previous and up-coming PROMOTE results is also provided by WDC-RSAT: http://wdc.dlr.de/data_products/SERVICES/rose/gome_rose_data_o3.php

1.5.2 Bibliographic references

Baier, F; Erbetseder, T; Morgenstern, O; Bittner, M and Brasseur, G: Assimilation of MIPAS data into a three-dimensional chemical-transport model. Q. J. R. Met. Soc, 131 (613), p. 3529 - 3542, DOI: 10.1256/qj.05.92, 2005.

Bittner, M., F. Baier: AFO2000 project INVERT, BMBF final report, 2006: http://www.bmbf.de/pub/AFO_2000_Abschlussbericht.pdf

Brühl, C., Drayson, S.R., Russel III, J.M., Crutzen, P.J., McInerney, J.M., Purcell, P.N., Claude, H., Gerandt, HALOE occultation experiment ozone channel validation. Adv. Space Res., 29, 11, 1637-1642, 1996.

Chipperfield, M. P. 1999 Multiannual simulations with a three-dimensional chemical transport model, J. Geophys. Res., 104(D1), 1781–1805

Elbern H., F. Baier, M. Bittner, R. Bochorishvili, H. Bovensmann, L. Hoffman, W. Joppich, J. Meyer, M. Riese, J. Schwinger, G. Stiller and Th. von Clarmann: Synoptic Analyses of Chemical constituents by Advanced Data Assimilation (SACADA), AFO2000 Newsletter 10, p 7-10, 2005.

Elbern H., F. Baier, M. Bittner, R. Bochorishvili, H. Bovensmann, L. Hoffman, W. Joppich, J. Meyer, M. Riese, J. Schwinger, G. Stiller and Th. von Clarmann: AFO2000 project SACADA, BMBF final report, 2006: http://www.bmbf.de/pub/AFO_2000_Abschlussbericht.pdf

Errera Q. and D. Fonteyn: Four-dimensional variational chemical assimilation of CRISTA stratospheric measurements, J. Geophys. Res., 106, pp 12,253-12,265, 2001.

Errera Q., F. Daerden, S. Chabrillat, J. C. Lambert, W. A. Lahoz, S. Viscardy, S. Bonjean, and D. Fonteyn, "4D-Var Assimilation of MIPAS Chemical Observations:

	<p align="center">GSE - PROMOTE 2 C6 Validation Report 3D Ozone Service</p>	<p>REF: PROMOTE-2 C6 ISSUE: 1.0 DATE: 19.06.2008 PAGE: 31 of 35</p>
---	--	--

Ozone and Nitrogen Dioxide Analyses”, *Atmospheric Chemistry and Physics Discussions*, 8, 8009-8057, 2008.

Geer A. J., W. A. Lahoz, S. Bekki, N. Bormann, Q. Errera, H. J. Eskes, D. Fonteyn, D. R. Jackson, M.N. Juckes, S. Massart, V.-H. Peuch, S. Rharmili, and A. Segers: The ASSET intercomparison of ozone analyses: method and first results, *Atmos. Chem. Phys.*, 6, 5445-5474, 2006.

Lahoz, W.A., A.J. Geer, S. Bekki, N. Bormann, S. Ceccherini, Q. Errera, H.J. Eskes, D. Fonteyn, D.R. Jackson, B. Khattatov, S. Massart, V.-H. Peuch, S. Rharmili, M. Ridolfi, A. Segers, O. Talagrand, H. Thornton, A.F. Vik and T. von Clarmann. The Assimilation of Envisat data (ASSET) project. *Atmos. Chem. Phys.*, 7, 1773-1796, 2007.

Vigouroux, C., M. De Mazière, Q. Errera, S. Chabrillat, E. Mahieu, P. Duchatelet, S. Wood, D. Smale, S. Mikuteit, T. Blumenstock, F. Hase, and N. Jones: Comparisons between ground-based FTIR and MIPAS N₂O and HNO₃ profiles before and after assimilation in BASCOE, *Atmos. Chem. Phys.*, 7, 377-396, 2007.

Wang, H. J., D. M. Cunnold, L. W. Thomason, J. M. Zawodny, and G. E. Bodeker, Assessment of SAGE version 6.1 ozone data quality, *J. Geophys. Res.*, 107, 4691, doi:10.1029/2002JD002418, 2002.